

Cie Gilles Jobin

Technical rider *Black Swan*

Choreography: Gilles Jobin

Music : Cristian Vogel

Dance : Susana Panadès Diaz, Isabelle Rigat, Gilles Jobin, Gabor Varga

Light designer : Daniel Demont

Manager : Mélanie Rouquier

Contacts :

Fonction	Noms	Téléphone	Email
Technical direction	Cie Gilles Jobin	+41 22 331 00 50	technique@gillesjobin.com
Manager	Mélanie Rouquier	+41 22 331 00 50 +41 76 317 89 88 (mobile)	melanie@gillesjobin.com

General remarks:

- Performance length : 55'
- Intermission : without
- Staff on tour : 2 technicians / 4 dancers / 1 manager
- Volume of the set : 1.5 m3
- Services required : 3 for the pre-set up, set up and rehearsal(s)
 1 for the bump out
- Dimensions minimales : Rake 0%
 Proscenium opening 12m
 Width: 15m
 Depth : 10m
 Height under the grid : 6m
- The stage, the wings and the fly system must be entirely cleared of everything except the requested material before the arrival of the Black Swan team.
- The technicians appointed to work on this performance must be same throughout the whole run.
- The time table of the technical rider must be respected unless agreed otherwise between the two parties. As a general rule we respect the working hours of the host space. Please forward this information to the technical director.
- We request from the host space the possibility to access the performance space on the day following the last performance in order to retrieve costumes that will have been washed the night before.

Stage

- Italian style black (velvet curtain) box with at least 4 wings and a backdrop.
No FOH curtains
- The floor must be covered in a black dance mats in excellent condition.
The dance mats should preferably be laid out from side to side.
The mats must be placed, but not stuck together before the arrival of the company.

Required material:

Number	Material	Description
1	Elevating stage or man lift (Genie lift style)	Working height: 6m minimum 8m ideally

Material provided:

No decor pieces, only the following props:

Object	Number of pieces	Dimensions	Weight	Content
Blue bag	3	90x50x40 cm	15	9 stuffed horses 8 stuffed rabbits 3 blankets
Black ski bag	1	130x25x20 cm	7	9 sticks
Flight case	3	115x35x20 cm	25	6 footlights+cables
Flight case	1	50x30x30 cm	10	1 sound desk



Dressing Rooms

Provide the following catering in the dressing rooms, to be renewed every day:

- Small bottled water for minimum 3 x 7 people
- Coffee and tea, fresh fruit, sandwiches for 7 people.

Number	Material	Description
2	Dressing rooms	With mirrors, table, chairs and clothes rail
1	Shower at least in the dressing room area	With hot water
4	Towels	

Costumes and maintenance:

Number	Material	Description
1	Washing machine	30°-40° short programme
1	Dryer	Delicate short programme
1	Ironing board + steam iron	
1	Clothes rail with coat hangers	

Lights

General remarks:

- The light control board must be in the auditorium facing the stage with a clear view of the stage.
- All the stage lights will be equipped with clamps, safety chains, gel frames and other necessary accessories.
- The requested material must have ad hoc cabling.

Required material:

Number	Material	Description
1	Memory lighting control desk minimum 96 circuits and 256 dimmers with 24 SubMasters with Follows, Times and Wait functions AVAB or ASCII format AVAB SAFARI or ETC EXPRESS type or Equivalent	
1	DMX 512 Outlet	
1	DMX 512 Connectors	Down stage right
2	Lignes directes 230V 10A	Down stage right and centre
1	Dimmable auditorium lighting	
48	Digital Dimmers (in addition to house lights)	2-3 kW type Juliat Digi VI or equivalent
1	Digital Dimmers	5 kW type Juliat Digi VI or equivalent
2	Profiles	1 kW type Juliat 613SX or equivalent
16	PC	1 KW type Juliat HPC 310 or equivalent
10	Fresnel or (PC)	1 KW type Juliat HF 310 or equivalent
1	Fresnel	5 kW 300mm lens
8	PAR 64	CP 60 – VN5P - G.E light bulbs
10	PAR 64	CP 62 – MFL – G.E light bulbs
3	Low Voltage	250 W 24V

Supplied material:

Number	Material	Description
6	DMX halogen flood lights	10x 75W 230V

Gelatines to be provided by the hosting space:

- The required gelatines must be in good working condition

Number	Material	Description
	Lee and Rosco filter gelatines	
16	L 053	For PC 1 kW format
10	L 708	For PC 1 kW format
8	R 100	For PC 1 kW format
8	R 114	For PC 1 kW format
10	R 114 in case of PC replacing Fresnel	For PC 1 kW format
1	L 244	For Fresnel 5 kW format
8	L 366	For PAR 64 format
10	L 711	For PAR 64 format
5	R 113	For PAR 64 format
5	R 114	For PAR 64 format
2	L 249	For Profile 613 format
2	R 119	For Profile 613 format

Annexe:

Lighting plot layout

Sound

General remarks:

- The sound board must be in the auditorium, facing the stage with a clear view of the stage.
The sound board must not be in a cubicle or under a balcony
- The following points are important to ensure that the performance runs smoothly, lacking material must be hired by the host structure.
- The listed broadcasting material corresponds to an auditorium capacity of about 300 seats.
This material must be adapted for greater capacity auditoriums.
- Please contact the technical director before hiring any material.

Required material:

Number	Material	Description
1	Sound control board 4 input / 4 group out / 2 out	
2	CD player with autopause / autocue	Tascam / Denon professional model
2	15" 2-way loudspeaker on the floor left and right back of the stage	Meyer CQ1 or LAcoustic MTD 115 or equivalent
4	15" 2-way loudspeaker elevated left and right auditorium	Meyer CQ1 or LAcoustic MTD 115 or equivalent
	Amplifications if necessary	
2	18" SubBass on the floor	Meyer 650 or LAcoustic SB 118 or equivalent
	Filter and amplifications if necessary	

Provisional Set up Planning:
Performance times to be confirmed.

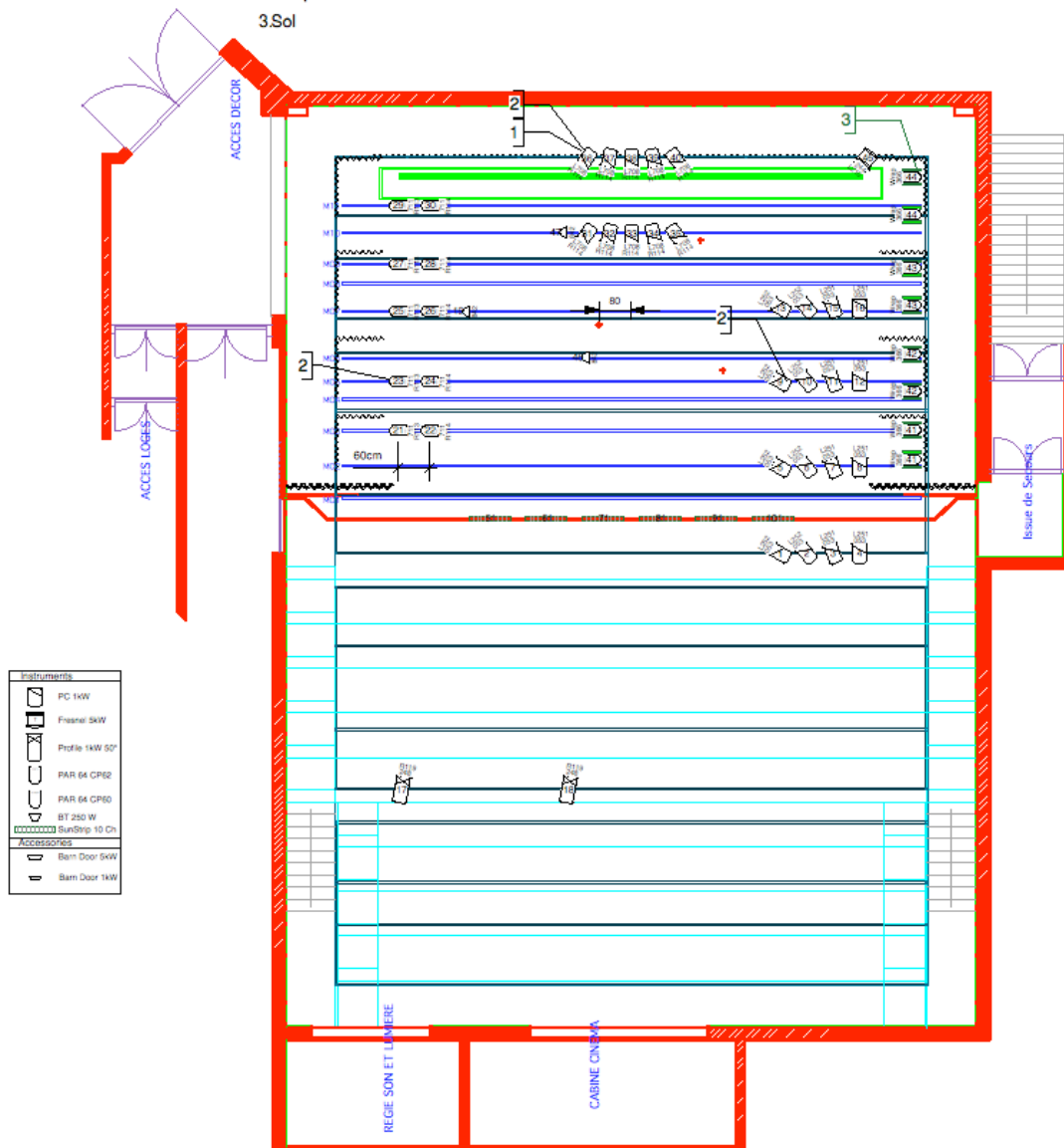
Technical personnel necessary at the host space.

Date	Time	Description	Stage manager	Stage hand	Fly system operator	Lighting operator	Electrician	Sound operator	Sound technician	Video operator	Costume assistant	Company technical		
D-1	14h – 18h	Black box curtains and dance mat fit in Light fit in Light focus Cue Recording	1	1	1	1	2					1		
	19h – 21h	Light focus (if difficult conditions)				1	2					1		
Performance day	9h – 12h	Finish light focus and cue recording Sound fit in				1	1		1			1		
	12h – 13h	Sound check						1				1		
	14h – 16h	Finish light sound Warm up Costumes maintenance	1			1		1			1	1		
	16h – 17h	Run										1		
	17h – 18h	Clean stage and prepare performance	1	1										
	20h – 21h	Performance	1			1		1				1		
	21h – 22h	Costumes maintenance									1			
Following day	16h – 17h	Set up stage	1	1								1		
	17h – 18h	Sound and light check				1		1				1		
	17h – 19h30	Warm up												
	20h – 21h	Performance	1			1		1				1		
	21h – 22h	Costumes maintenance									1			
Bump out day	16h – 17h	Set up stage	1	1								1		
	17h – 18h	Sound and light check				1		1				1		
	17h – 19h30	Warm up												
	20h – 21h	Performance	1			1		1				1		
	21h – 23h	Bump out Costumes maintenance	1	1	1	1	1	1			1	1		

Annexe

Notes

- 1 Passerelle 1er niveau perroquet sur rambarde
- 2 Tous les projecteurs indépendants
- 3 Sol



Show Name Cie G.Jobin Black Swan		
Reference Final Création	Drawn By DD	Date 25/04/09
CAD File Name		