

Technical needs in other spaces than theatres.

*QUANTUM has been initially created in an industrial space at CERN-CMS,
with the audience seated all around the stage.*

We can adapt this show in other spaces than usual theatres.

This version requires a case study for each space.

Please contact our technical manager with plans and informations directly to see if it is feasible.

Essential elements :

- Hanging points for the motors of the grid carrying our light instalation
- 12m x 9m dancing space with dancefloor (or foam mate) + dance mate.
- 8 metres minimum from floor to grid
- All sound equipment mentioned page 8
- 2x 32A electrical arrival minimum
- One "dressing room" reserved for the dancers, heated and with toilets



Hanging points and grid at CERN-CMS

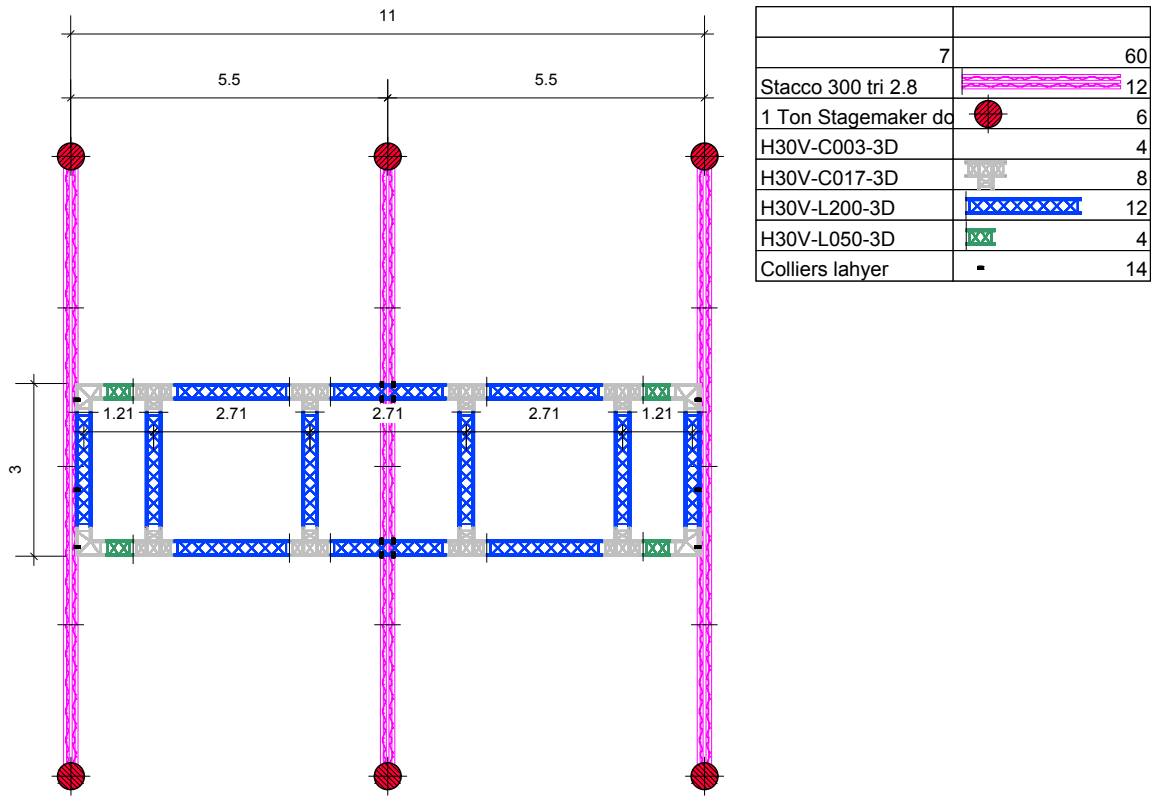
General view of the space at CERN-CMS



Stage and audience : CERN-CMS



General view CERN-CMS during show



Plan of grid installation at CERN-CMS