

Cie Gilles Jobin
A+B=X



Cie Gilles Jobin
Rue de la Coulouvrenière, 44
CH-1204 Genève
Switzerland
T +41 22 331 00 50

Artistic direction and choreography	Gilles Jobin	gilles@gillesjobin.com
Technical manager	Marie Prédour	technique@gillesjobin.com +41 76 34 38 988
Administration	Rosine Bey	admin@gillesjobin.com +41 76 317 89 88

General remarks

<u>Show A+B=X</u>	Choreography	Gilles Jobin
	Music	Franz Treichler, The Young Gods
	Light design	Daniel Demont
	Dance (restage)	Ruth Childs
		Bruno Cezario
		Susana Panadés Diaz
	Technical manager – Light and sound operator	Marie Prédour

<u>Staff on tour</u>	1x	Choreographer/technician	OR	3x	dancers
	3x	Dancers		2x	technicians
	1x	Technician			

Equipment transported volume 0,5m3

Minimum call Set-up and rehearsals : 5 x 4h
Strike down : 1 x 2h

Stage, backstage and grid shall be entirely free of equipment when technical crew arrives, except for the material asked.

**We need a total black out during the whole show so please hide any light in the venue.
NO emergency lights on stage.**

Stage must be cleaned before dancers arrival and one hour before each show.

Schedule example

Day 1 (1 day before show)

9h-13h Light/Stage/Sound/Projectors set-up
14h-18h Light/Stage/Sound/Projectors set-up
Focusing + Stage cleaning
19h-22h General rehearsal

Local staff required 2x light technicians
1x stage technician
1x sound technician

1x technician for the evening rehearsal

Day 2 (show)

9h-13h End of focusing, programming
Soundcheck
14h-18h Warm up, rehearsals, last details
19h Preset
20h-21h Show
22h Strike down

Local staff required Morning 2x light technicians + 1x sound technician
Afternoon 1x light technician + 1x sound technician
Evening 1x stage technician

STAGE / SCENERY

Minimum dimensions

Opening 10m
Depth 10m
Grid height 6m
Rake 0 %

At the beginning of the show we project with Super 8 projectors an image on the dancer's bodies. We place the projectors on a wooden board with castors which is manipulated by one of the dancers.

At the end of the show a 16 mm projector will retro-project a 4m x 4m image from upstage to a screen hanged on the front of stage (about 10m/12m distance).
The screen is hanged on a pipe for the beginning of the show, it is unrolled with ropes and poulies system at the end of the show.

The Super 8 projectors and the 16mm projector will be connected to the dimmers and controlled by the lighting desk.

Equipment to be provided by the local organizer

1x Black dancefloor covering the whole stage if not please indicates us the dimensions
1x Intercom

Drops and side curtains

Xx Curtains and drops

Depending on the venue we play empty stage or "german black box".

If german black box, we need an opening in the middle of the backdrop upstage.

It has to be made with a simple system to be activated by a dancer at the end of the show.

Under pipe

1x 6m pipe
2x 20/30m ropes
1x simple pulley
2x double pulleys
1x Hanging point on stage for the ropes

16 mm projectors

1x 16mm cinema projector
Please contact us before any rental for more details.

1x Electrical extension (10m minimum)

Super 8 projectors

The super 8 projectors need 220V to run, if 110V please provide an electrical transformer.

1x Black wooden board, dimensions 50cm x 2.80m minimum (no more than 3m) and 2cm thick.
Please check with us before building it, depending on the way of transport we can bring our own board.

4x Electrical extensions (10 metres minimum) + 4x electrical adaptors Euro plugs to local plugs

Provided by the company

- 4x Super 8 projectors + films
- 1x 4m x 4m50 screen with PVC tubes
- 1x Small wooden screen on stage
- 4x Castors for the wooden board
- xx Tools for the equipment above

SOUND

Sound is a very important part of the show. We ask for a very good quality system, adapted to the venue dimensions.

The sound board must be facing the stage, in the middle alongside the lighting desk (no cabin neither under balcony).

If needed, audience's seats must be removed.

Equipment to be provided by the local organizer (example of 200 seats space)

- 1x 6 in / 2 Out LR / 4 aux minimum type Yamaha 01V or LS9 or equivalent
- 2x CD players auto cue - auto pause Type Tascam
- 2x Speakers upstage Type L-Acoustic NTD 112 / NTD 115 or equivalent
- 2x Speakers downstage Type L-Acoustic NTD 112/ NTD 115 or equivalent
- 2x Subs Type SB 118 or equivalent
- 1x 31 bands EQ (if not in the desk)
- 1x Delay (if not in the desk)
- 1x Stereo jack 2.5mm to mini jack cable
- xx Cables and amplifiers for the equipment above

Provided by the company

- 2x CD
- 1x Computer for back up and warm-up.

LIGHT

To be provided by the local organizer

- 1x Lighting desk 24/48 masters (with submasters, cues, times and wait)
Type : Avab Presto, Congo, ETC Element / Ion...
- 1x Intercom
- 40x Dimmers 2kW Type Juliat Digi VI or equivalent
- 1x Dimmable audience light

Projectors

- 4x PC 500W/650W (Fresnel accepted)
- 27x PC 1 kW (Fresnel accepted)
- 1x Profile 1 kW 22°/40°
- 6x PAR 64 1 kW CP61
- 1x Low Voltage 500W

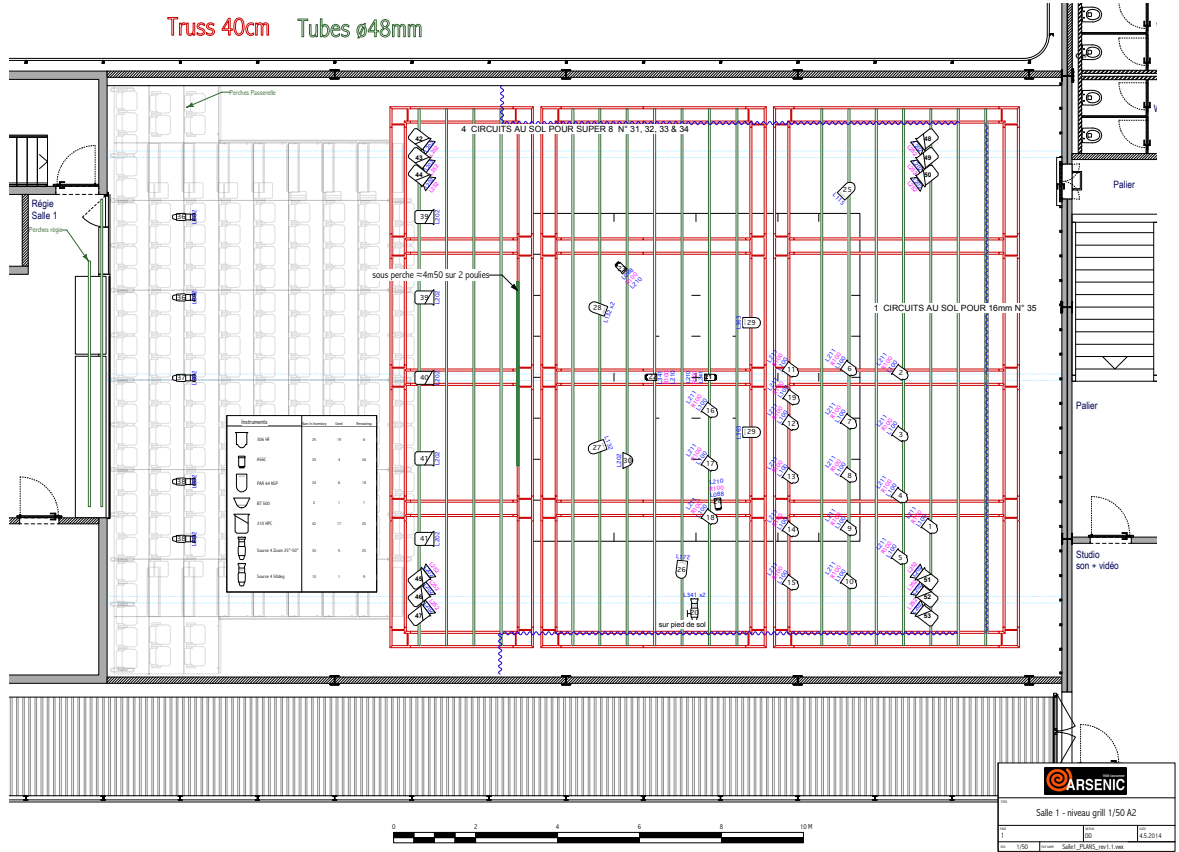
Gels

- 4x Lee 202 format PC
- 4x Lee 210 format PC
- 19x Lee 211 format PC
- 19x Lee 100 format PC
- 23x Rosco 100 format PC
- 2x Lee 341 format PC
- 2x Lee 088 format PC
- 1x Lee 202 format Low voltage

- 2x Lee 341 format profile

- 1x Lee 115 format Parcan
- 1x Lee 172 format Parcan
- 3x Lee 132 format Parcan
- 2x Lee 363 format Parcan

Technical Rider A+B=X



DRESSING ROOM

- 2x Dressing rooms for 5 people with chairs, tables, mirrors and light.
- 1x Warm shower minimum in the dressing room area
- 5x Towels
- 1x Rail clothes
- 1x Washing machine and dryer

Please provide in the backstage when team arrives : water, dry and fresh fruits, coffee and tea, snacks, chocolate....